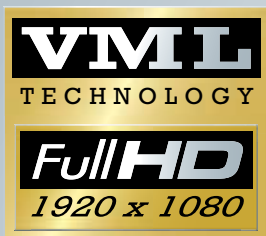




# Vehicle System RCA 4.0

Next generation CCTV Inspection



***rausch***



# RCA 4.0 Full HD

Patent no: DE 10 2008 015 442 B4

CCTV Inspection from 100 mm to 2500 mm  
Satellite System from 135 mm to 1800 mm



The RCA 4.0 enables the world's first transmission in Full HD with a resolution of 1920x1080 pixel using copper cables and no optical fibers. This has become possible because of the specially developed and patented VML technology. The result: Improved quality of the inspection data and reduced running cost based on simplified service requirements.



## RCA 4.0 technology in the studio

- Digital CCTV technology in Full HD quality 1920 x 1080 pixel or MPEG4 with 720 x 576 pixel
- Ergonomic operating concept with electrically adjustable desk for a fatigue-free working environment
- System control with industrial PC including a 15" touch screen and two multifunctional joysticks to control the camera and crawler
- User adjustable surface and joystick control
- Digital overlay technology to display readings and data in various country versions
- Display technology and adjustable text size and color
- 22" CCTV monitor in Full HD
- Serial bus system for the control of cable drums, crawlers, cameras and the Full HD Satellite System
- Ethernet connection for video and data exchange including a documentation PC and software (PipeCommander, WINCAN and other recording programs)
- Alternative recording in MPEG4 format is possible in case Full HD data quantities cannot be processed
- Available as Full HD version or as a system in „Full HD prepared“ for later upgrade



## System highlights in the rear area

- Rear area fittings with passage way to the studio
- Water supply with hand wash basin
- Cable drum ELKA 600 HD including observation monitor, telescopic swivel arm and chain winch  
Cable length up to 600 m
- Cable drum Quadtro SAT HD  
Cable length 160 m  
Push cable 40 m
- Satellite system for the inspection of laterals in Full HD

## Options

- Deformation measuring
- LATRAS for lateral tracking
- Pressure tests for leak testing of joints, pipe sections, branches and laterals
- Energy supply with lithium-ion-batteries
- For pipes up to 2500 mm in connection with the crawler C 135 and height extension or on a float

**Lightweight installations for the class B driver's license up to total weight of 3,500 kg.**



**Crawler C 100 cross with camera KS 60 HD**



**Crawler C 135 with camera KS 135 HD**





### Modular system M 135

Crawler C 135 with satellite system M 135 and camera KS 60 HD

Application range from 135 mm to 1200 mm  
(with electric lift from 150 mm)



### Modular system M 200

Crawler C 135 with satellite system M 200 and camera KS 60 HD

Application range from 200 mm to 1800 mm  
(with electric lift from 200 mm)



**LATRAS sensor head with camera KS 60 HD and jetting system**



**Crawler C 135 with camera KS 135 Scan HD**

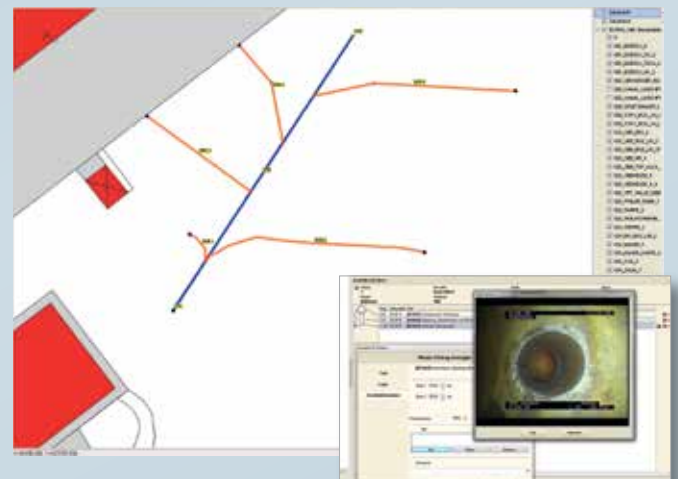
### Hardware and software seamlessly linked

Our systems can be connected with the PipeCommander software and the PicoMaps mapping module. All relevant master data and inspection results are compiled in PipeCommander and can be edited easily from there at any later point. All projects are administered through a well structured menu and can be exported and printed at any time. Inspection data and results are available as videos, photos, protocols and statistics.

### PipeCommander specifications

- Section, lateral and manhole data
- Powerful, configurable customer and project management
- Macro control for camera and crawler
- Hardware supported image digitization
- Integrated, continuously updated standards
- Image grabber

As a powerful additional module of PipeCommander, PicoMaps gathers all available geo-coordinates automatically from the database. Based on this data PicoMaps visualizes laterals in best 3D quality or automatically with LATRAS.



[www.rauschtv.com](http://www.rauschtv.com)

Rausch GmbH & Co. KG  
Bruehlmoosweg 40  
88138 Weissensberg  
Germany  
Phone: +49 8389 898-0  
Fax: +49 8389 898-41  
Mail: [info@rauschtv.com](mailto:info@rauschtv.com)

**rausch**